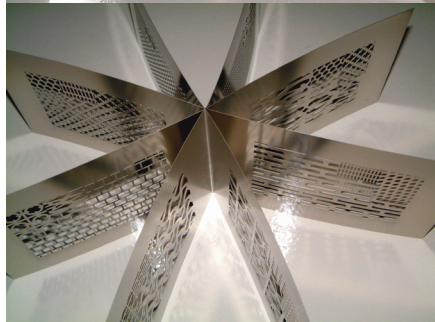
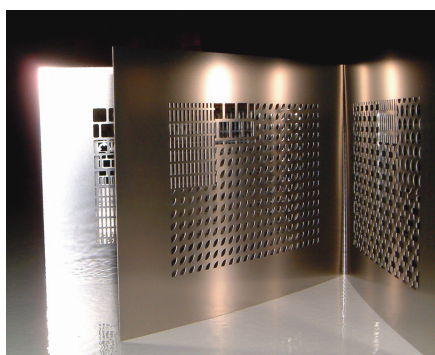




Queensland Art Gallery
Barbara Heath - Jeweller to the Lost
Solo Exhibition.
October 15 2005–March 26 2006.
www.qag.qld.gov.au
www.australianartbooks.com.au



Artist Book entitled: Freewheeling 2005.
State Library of Queensland collection,
Craft Queensland in association.



Barbara in Montreal 2006.

Barbara Heath CURRICULUM VITAE: [Version #35 - dated: 13 December 2022]
1954 Born in Sydney, Australia.
1983 Established studio in Brisbane, developed © Bh range of jewellery.
1990 Developed 'Jeweller to the Lost' commissioned and bespoke studio jewellery.
1997 Commenced large scale sculptural work from Brisbane.

EDUCATION

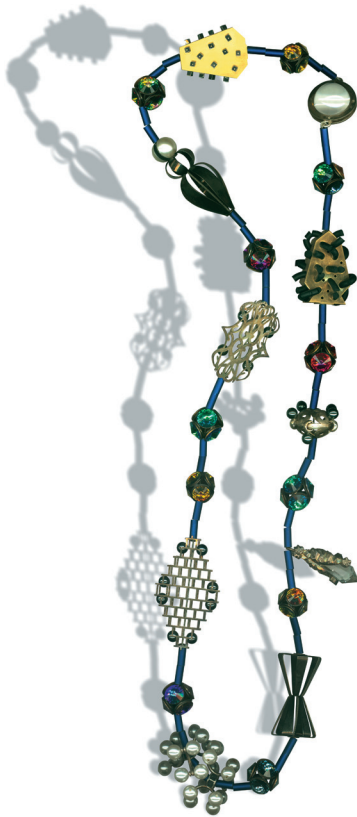
1970–72 Apprentice to Laszlo Puzsar, Studied gold-and-silver-smithing. RMIT Melbourne.
1987 Studied contemporary jewellery at Parsons School of Design in New York.

SELECTED SOLO EXHIBITIONS

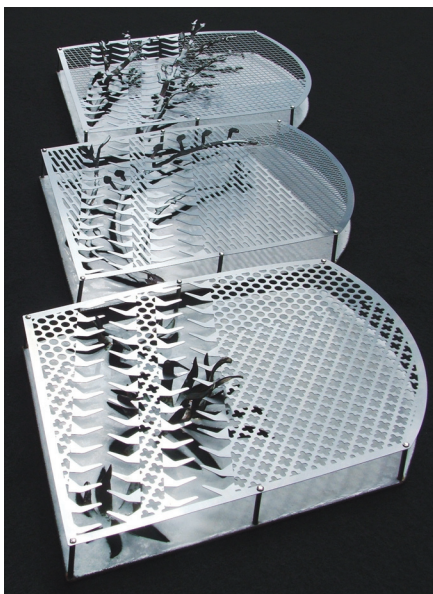
2015 Midlands Lepidoptera: Handmark Gallery, Hobart.
2013 Tasmanian Landscapes: New Jewellery from Barbara Heath, Handmark Gallery, Hobart.
2010 Tinsmith: An Ordinary Romance, Gallery Artisan, Brisbane. [exhibition catalogue] and touring Regional Galleries.
2005 Barbara Heath: Jeweller to the Lost, Solo Exhibition. Queensland Art Gallery, Brisbane. [exhibition catalogue].
2000 Guardian Spirits, Andrew Baker Art Dealer, Brisbane.
1999 A Little Birdy Told Me, Craft Queensland Gallery, Brisbane.
1997 Patron Maker and Jewel, Brisbane City Gallery, Brisbane.
1996 Clarence 'Rockefeller' Chafee, Plötz Gallery, Brisbane.
1988 Symbols for Personal Definition, Studio Noko, Sydney.
1987 New Icons, (with Sheridan Kennedy), Roz MacAllan Gallery, Brisbane.

SELECTED GROUP EXHIBITIONS

2022 Artisan Gallery & Store - Jeweller to the Lost stock launch, Brisbane.
2019–2020 New Woman: Museum of Brisbane.
2017 15 Artists Exhibition: Redcliffe Art Gallery, Moreton Bay.
2016 Ephemeral Traces: University Art Museum, Brisbane.
2014 Chain Reaction: Gallery Artisan, 'Following the threads of influence between fifteen Queensland makers'.
2013 Silver: Collaboration with Marian Drew, Museum of Brisbane, November–April. [exhibition catalogue].
2012 Life in your Hands: Lake Macquarie City Art Gallery, NSW. National Tour.
2011 Tinker, Tailor, Soldier, Sailor: Artisan, Brisbane. September–November, then touring nationally.
2010 The Ipswich House: Heritage house portraits by contemporary Queensland artists, Ipswich Art Gallery, Ipswich. September–December.
2009 Mayo Exhibition: Seven jewellers and seven sculptors, Gold Coast City Art Gallery, March–May.
2009 Fresh start-New directions: Aaron Faber Gallery, NYC, USA.
2007 Process Documented: Aaron Faber Gallery, NYC, USA. October–November.
2006 Luminaries: new work by six Australian jewellers, SCA Galleries, Sydney.
2005 Sufferance: women's artists' books (Barbara Heath in collaboration with Malcolm Enright), a partnership exhibition between Craft Queensland and the State Library of Queensland, Brisbane [exhibition catalogue].
2005 Artist's Choice: Aaron Faber Gallery, NYC, USA.
2005 Valentines Show: De Novo, Palo Alto, USA.
2003 Chromophobia: Studio Ingot, Melbourne [exhibition catalogue].
2001 Guild Unlimited: Craft Victoria, Melbourne, and travelled to Edinburgh School of Art, Edinburgh [exhibition catalogue].
1997–99 Contemporary Vessels and Jewels: Australian Fine Metalwork Shanghai Museum, Shanghai and toured Queensland [exhibition catalogue].
1999 Circles about the Body: University of Tasmania Gallery, Launceston [exhibition catalogue].
1995 Out of the Void: Mad and Bad Women from the Queensland Art Gallery Collection, Queensland Art Gallery, and toured Queensland [exhibition catalogue].
1993–94 Art of Adornment: National Museum of Modern Art, Kyoto, and travelled to venues in Tokyo and Fukuoka in Japan, Seoul in Korea, and in Indonesia [exhibition catalogue].
1991 The Body in Question: University of Tasmania, Launceston.
1991 Contemporary Jewellery in Australia & Japan: Studio Com, Kyoto.
1989–90 Australian Fashion: The Contemporary Art, Victoria and Albert Museum, London; Powerhouse Museum, Sydney; and travelled to venues in Tokyo Japan, and Seoul in Korea [exhibition catalogue].
1989 Queensland Jewellers: Queensland House, London.
1988 A Contemporary Caste: A Homage to Women Artists in Queensland, Past and Present, Centre Gallery, Surfers Paradise [exhibition catalogue].
1988 Classics: Crafts Council of New South Wales, Sydney.
1987 Survey of Queensland Craft: Crafts Council of Queensland, Brisbane.
1987 Little Alternatives, Crux Gallery, Brisbane.
1986 Survey of Queensland Craft: Crafts Council of Queensland, Brisbane.
1986 Fibre and Jewellery: Queen Victoria Museum and Art Gallery, Launceston.
1985 To Scale: Crafts Council of Queensland touring exhibition, Regional Queensland [exhibition catalogue].
1983 Invitation Christmas Exhibition: Crafts Council of Queensland, Brisbane.



The Necklace of Princess Fiormondi,
Collection of Arts Queensland.



Life in your Hands: Sculpture, Stainless
steel, white enamel fusion on copper sheet.
Lake Macquarie City Art Gallery, NSW.
National Tour 2012–2013.



PUBLIC ART COMMISSIONS

2014–2016 New Nature, 3 suspended foyer sculptures, 1 William Street, Brisbane.
2008 Ipswich Houses Commission, (with mal E) Ipswich Art Gallery, Ipswich.
2006 Counterpoint, (with Mandy Ridley) BCC, Taringa, Brisbane.
2004 Breezeway Lattice, door handles/lift plates, Brisbane Magistrates Court, Brisbane.
1999 A Tree a Rock a Cloud, titanium and stainless steel sculpture, Queensland
Investment Corporation, Central Plaza 2, Brisbane.
1998 Net, stainless steel sculpture, Department of Public Works, Neville Bonner Building,
Brisbane.

PUBLIC COLLECTIONS

Mater Health Services Art Collection.
Horsham Regional Art Gallery, Victoria.
Ipswich Regional Gallery, Ipswich.
State Library of Queensland, Brisbane.
Art Gallery of Western Australia, Perth.
Arts Queensland, Department of Education and Arts, Brisbane.
Powerhouse Museum, Sydney.
Queen Victoria Museum and Art Gallery, Launceston.
Queensland Art Gallery, Brisbane.
Griffith University Art Collection, Brisbane.

SELECTED AWARDS AND GRANTS

2018 St Sebastian's Design Showcase, Best Established Artist Award.
2016 St Sebastian's Design Showcase, Best Established Artist Award.
1986–2006 Four Australia Council grants.
1992–2009 Four Arts Queensland grants.
2008 Redcliffe Craft Award—2nd Prize, Moreton Bay Regional Council.
2005 The Brisbane Magistrates Court by Cox Rayner Architects in joint venture with
Ainsely Bell & Murchison Architects,—Art and Architecture Award 2005.
2004 Royal Australian Institute of Architects (Queensland chapter)—State Award for Art
& Architecture Awards, Queensland Architecture Awards 2004.
1983 Westpac Craft Award.

SELECTED BIBLIOGRAPHY

2018 'Jeweller to the Lost': <http://www.spaceandprocess.com/news/spaceandprocess/2018/07/01/jeweller-to-the-lost-7c5pj-pcdmr-bgpge>
2015 'Fragments become Fashion': Design Watch, July Hobart Mercury.
2014 Place & Adornment - Skinner, Damian & Murray, Kevin Bateman pp. 50,155,156.
2013 'Silver' 44 page catalogue, Essay by curator - Jacqueline Armitstead, pp.22–23.
2013 Issue 4 - The Fashion Archives, go to http://thefashionarchives.org/?pieced_together=malcolm-enright-barbara-heath
2012 'Life in your hands - Art from Solastalgia': Touring catalogue. pp.26–29.
2012 100 women, '100 brooches, 100 stories': 2nd Edition, 134 pages, pp.18.
2012 Tinsmith: An ordinary romance. 36 page touring catalogue, published by Artisan.
2011 'Labour of Love': Saturday Magazine, May Hobart Mercury.
2010 Tinsmith: 'New tricks from old trades' - Self published research documents. 16pp.
2009 Burton-Jones, Joan. 'Queenslanders All Over. p.417.
2008 Bravura - Arts Queensland review of Cultural Contemporary Talent pp.28–29.
2007 Design - Discussion Paper, Queensland Centre for Design. p.4.
2007 Mornement, Adan & Caroline. 'Galleries of Australia & New Zealand'. Artisan
pp.51.
2004 McAulay, Bettina. 'Other significant art: ArtWorks Queensland'. Eds Judith Wassell
& Maria Friend. Public Art Agency and Department of Public Works, Brisbane, pp.38–9.
2004 Stafford, J, Wood, P, Brecknock, R, Rayner, M & Younger, J. 'Engagement:
Art + Architecture— Art Built-in Brisbane Magistrates Court'. Department of Justice
and Attorney, General and Public Art Agency, Walter Construction and Cox Rayner
Architects, 2004.
2004 Le Van, Marthe (ed.). '1000 Rings: Inspiring Adornments for the Hand'. Lark
Books, Asheville, U.S.A.
2003 Llew M. 'public art + practice: East + West' Shanghai ke xue ji shu chu ban she,
Shanghai.
2000 Beck, H, Cooper, J, Betsky, A, Connah R, Feireiss, K, Glusberg, J, Heneghan, T,
Mostafavi, M, Riley, T, Salazar, J. '10 X 10: 100 Architects, 10 Critics'. Phaidon Press,
London.
1998 Anderson, Patricia. 'Contemporary Jewellery in Australia and New Zealand'.
Craftsman House, Singapore.
1992 Cochrane, Grace. 'The Crafts Movement in Australia: A History'. University of New
South Wales Press, Sydney.
1989 Burch, Anna. 'New Icons'. Jewellery Australia Now, pp.5–58. Craft Australia.

Blog: <https://viewersite.wordpress.com/>

Directory: <https://www.co-opones.to/male/viewer/index.html>

Older web: <https://www.co-opones.to/barby/bhcom/index.html>

BARBARA HEATH

Jeweller to the Lost - Australia

<barby@jewellertothelost.com.au>

Barbara 0413 085 172 Malcolm 0431 464 470