

Double page spread: Baubles, Bangles & Beads. Touring Show - from Bathurst Regional Gallery 2006



Rhana Devenport



Rhana Devenport

Rhana Devenport is an independent curator and writer based in Sydney. She is currently Manager, Public & Education Programs, for the 15th Biennale of Sydney in 2006. She was the co-curator of the Asia-Pacific Triennial of Contemporary Art at the Queensland Art Gallery from 1994-2004 and was Guest Editor of *Object* magazine in 2004-2005.



Indian Moonstone Ring 1996, sterling silver, 18ct gold, moonstone, 35 x 25 x 22 mm collection of Rhana Devenport.
Pearl Devi Neckpiece 2002 (detail), baroque pearls, stainless steel, overall 235 x 140 x 8 mm collection of Rhana Devenport.

barbara heath



Barbara Heath

Brisbane-based Barbara Heath was born in Sydney in 1954 and studied gold and silversmithing at the Royal Melbourne Institute of Technology from 1970 to 1972.

She established her Brisbane studio in 1983. Since 1990 the Barbara Heath range of jewellery has been sold and exhibited internationally as has her *Jewellery to the Lost* commissioned jewellery.

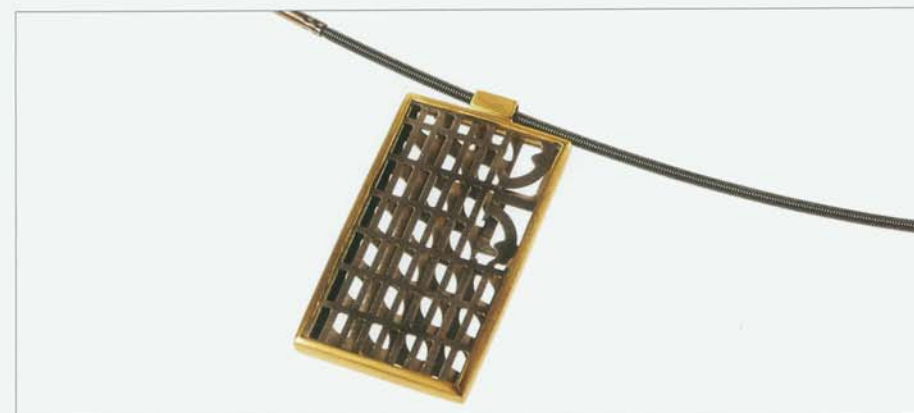
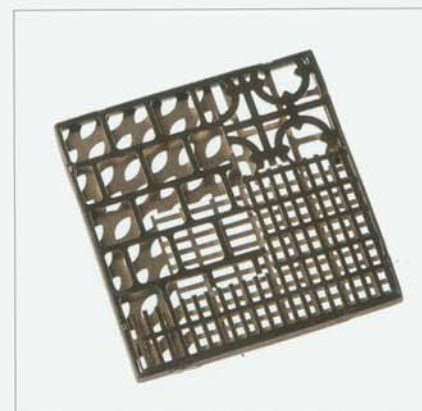
Barbara has had several solo exhibitions in Australia most recently *Barbara Heath: Jeweller to the Lost* at the Queensland Art Gallery in 2005-2006.

Her work has been seen in many group exhibitions and is represented in the collections of the State Library of Queensland, Art Gallery of WA, Arts Queensland, Powerhouse Museum, Sydney, Queen Victoria Museum and Art Gallery, Launceston and the Queensland Art Gallery.

Barbara has received commissions for a number of public art projects including the Brisbane Magistrates Court in 2004 and 2005.

She has also received grants from the Australia Council in 1986, 1987 and 1996, and the Queensland Government in 1992, 1996 and 2005.

Portrait of Barbara Heath
 by Andrea Higgins 2005
 courtesy of the artist and Andrea Higgins



Brooch 2005, etched stainless steel lattice, 925 silver oxidized, 45 x 45 x 3 mm collection of the artist
Brooch 2005, etched stainless steel lattice, 925 silver oxidized, 45 x 45 x 3 mm collection of the artist
Neckpiece 2005, etched stainless steel lattice, 18ct gold, omega 925 silver oxidized, 150 x 125 x 3 mm collection of the artist